

m o o o i<sup>®</sup>



## Nest Chair

---

The Nest Chair's linear, clear metal structure lifts the plumpest and softest cushions from the floor, creating a comfy, elevated nest for one or more people.

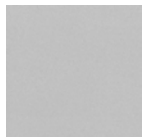
---

<b>Designer</b>	Marcel Wanders
<b>Year of design</b>	2013
<b>Material</b>	KTL and powdercoated steelframe (suitable for outdoor use); Mixed foam, feather & fiber flock filling

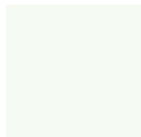
---

---

## Nest Frame



Outdoor  
powdercoated  
frame: Fine  
texture metallic



Outdoor  
powdercoated  
frame: Satin  
White 9016

---

## upholstery categories

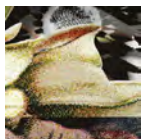
Flower Bits  
One Minute  
Oray  
Faux  
Softlinen  
COF

Bouclé  
Jacquard  
Arredo Leather  
Cervino Leather

*All fabrics are removable*

---

## Flower Bits



---

## One Minute



## Oray

### composition

8% co, 38% vi, 15% pl, 39% li

### abrasion

25.000 martindale

### lightfastness 4

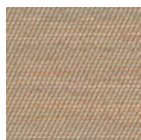
### firetest

FR BS5852 0/1

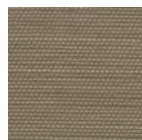
EN1021 I&2



Oray  
**Cream**



Oray  
**Sand**



Oray  
**Rock**



Oray  
**Mineral**



Oray  
**Gravel**



Oray  
**Dark Gull**



Oray  
**Copper**



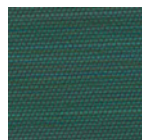
Oray  
**Rust**



Oray  
**Flamboyant**



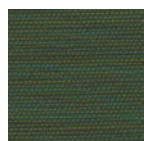
Oray  
**Oil**



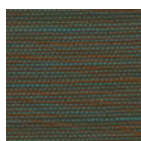
Oray  
**Aqua**



Oray  
**Peyote**



Oray  
**Ocean**



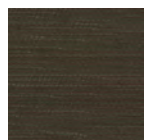
Oray  
**Metal**



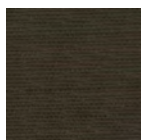
Oray  
**Griffin**



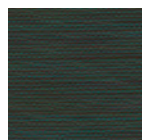
Oray  
**Dusk**



Oray  
**Chestnut**



Oray  
**Dark**



Oray  
**Indigo**



Oray  
**Ochre**

---

## Faux

**composition**

100% pl

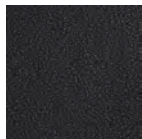
**abrasion**

50.000 martindale

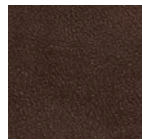
**lightfastness 4****firetest**

FR BS5852 0/1

EN1021 I&2



Faux  
**Black**



Faux  
**Brown**

---

## Softlinen

**composition**

100% Linen

**abrasion**

25.000 martindale

**lightfastness 6****firetest**

FR BS5852 0/1

EN1021 I&2



Softlinen  
**Beige**



Softlinen  
**Brown**

---

## Bouclé

### composition

43% co, 28% pan, 14% pa, 12% vi, 3% pl

### abrasion

20.000> martindale

### lightfastness 4

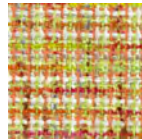
### firetest

FR BS5852 0/1

EN1021 I&2



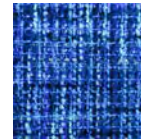
Bouclé  
**Black white**



Bouclé  
**Rainbow**



Bouclé  
**Brown**



Bouclé  
**Blue**

---

## Jacquard andaz

### composition:

34% cotton - 30% viscose - 24% linen - 12% polyamide

### abrasion:

25000 martindale

### firetest:

BS 5852 : Part 1 : 1979

BS EN 1021 I&2



Jacquard  
**Andaz**

---

## Jacquard Old Black & Blue

### composition

52% vi, 38% co, 10% li

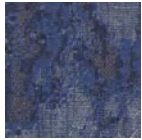
### abrasion

20.000> martindale

### firetest

FR BS5852 0/1

EN1021 I&2



Jacquard  
**Old Blue**



Jacquard  
**Old Black**

---

## Jaquard Fresco

### composition

40% vi ,36% co,14% pl, 10% li

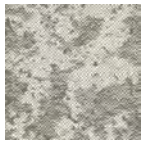
### abrasion

20.000> martindale

### firetest

FR BS5852 0/1

EN1021 I&2



Jaquard  
**Fresco**

---

## Arredo Leather

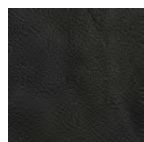
### composition

100% semi aniline leather

### firetest

FR BS5852 0/1

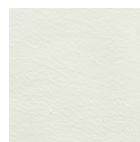
EN1021 I&2



Arredo Leather  
**Black**



Arredo Leather  
**Brown**



Arredo Leather  
**White**

---

## Cervino Leather

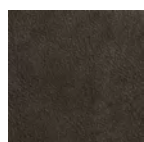
### composition

100% aniline leather

### firetest

FR BS5852 0/1

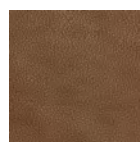
EN1021 I&2



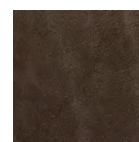
Cervino Leather  
**Anthracite**



Cervino Leather  
**Cognac**



Cervino Leather  
**Mud**



Cervino Leather  
**Pure**

---

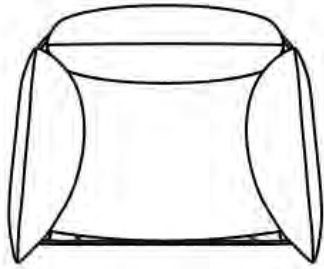
## cleaning instructions

Moooi recommends using a good furniture polish and a soft cloth. Apply generously in layers to the surface and use the cloth to shine. Do not use abrasive fabrics, gently remove tough stains with warm water and a trusted multi-surface cleaner.

# m o o o i<sup>®</sup>

## dimensions

100cm | 39,4"



53cm | 20,9"



59cm | 23,2"

49,5cm | 19,5"

48cm | 18,9"

75cm | 29,5"

