

m o o o i[®]



Bart Sofa & Armchair

The Bart Family collection of sofa`s, armchairs, daybed and canapés is originally inspired by the rounded shapes & sumptuous glory of 18th century Rococo. Moooi works / Bart Schilder reinterprets such splendor, adding genuine pleasure and softness to the classic silhouette by using modern day skills and a timeless eye for detail.

Designer	Moooi Works
Year of design	2012
Material	Wooden frame covered in foam and dacron, the seat cushion is made in foam.

detailing

Bart sofa is produced with removable covers for the seat cushion and all pillows (please check per category).

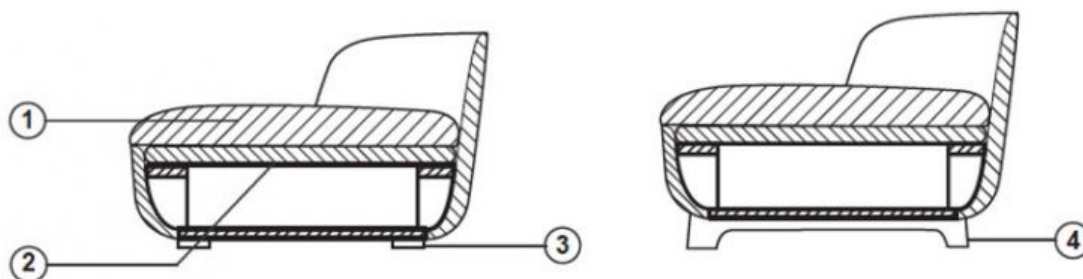
There are 3 compositions available; SOFA (low seat), CANAPE (active seat) and DAYBED.

The Daybed comes with a set of pillows in matching upholstery.

technical

The Bart sofa is constructed from a wood frame covered in foam and dacron, the seat cushion is made in foam and removable.

Bart sofa is produced with removable covers for the seat cushion and all pillows (please check per category).



1. Multiple density fire retardant foam composition + dacron on wood frame
2. Elastic straps fixed on the wood base
3. Plastic glider feet
4. Solid wood legs (for Canape)

upholstery categories

Macchedil Sottile
Macchedil Grezzo

Macchedil Sottile/Grezzo Composition

Oray

Faux

Bouclé

Twill

Summit Uni

Twill/Summit Uni Composition

Velour

Arredo Leather

Cervino Leather

Macchedil, Sottile

composition

49% vi, 24% pl, 21% li, 6% co

abrasion

30.000 martindale

lightfastness 4

firetest

FR BS5852 0/1

EN1021 I&2



Macchedil Sottile
Black indigo



Macchedil Sottile
Pinkish



Macchedil Sottile
Off white



Macchedil Sottile
Light grey



Macchedil Sottile
Light brown



Macchedil Sottile
Grey grey



Macchedil Sottile
Anthracite



Macchedil Sottile
Blue grey



Macchedil Sottile
Cappucino



Macchedil Sottile
Deep blue

Macchedil, Grezzo

composition

47% co, 20% vi, 18% pi, 8% li, 5% pc, 2% af

abrasion

18.000 martindale

lightfastness 4

firetest

FR BS5852 0/1

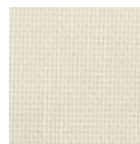
EN1021 1&2



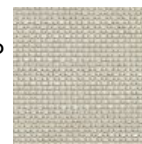
Macchedil Grezzo
Black indigo



Macchedil Grezzo
Pinkish



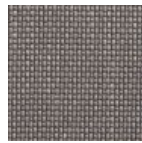
Macchedil Grezzo
Offwhite



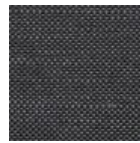
Macchedil Grezzo
Light grey



Macchedil Grezzo
Light brown



Macchedil Grezzo
Grey grey



Macchedil Grezzo
Anthracite



Macchedil Grezzo
Blue grey



Macchedil Grezzo
Cappuchino



Macchedil Grezzo
Deepblue

Oray

composition

8% co, 38% vi, 15% pl, 39% li

abrasion

25.000 martindale

lightfastness 4

firetest

FR BS5852 0/1

EN1021 I&2



Oray
Cream



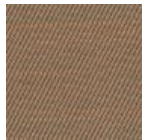
Oray
Sand



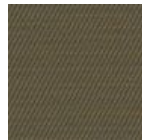
Oray
Rock



Oray
Mineral



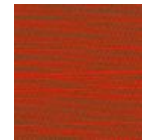
Oray
Gravel



Oray
Dark Gull



Oray
Copper



Oray
Rust



Oray
Flamboyant



Oray
Oil



Oray
Aqua



Oray
Peyote



Oray
Ocean



Oray
Metal



Oray
Griffin



Oray
Dusk



Oray
Chestnut



Oray
Dark



Oray
Indigo



Oray
Ochre

Faux

composition

100% pl

abrasion

50.000 martindale

lightfastness 4

firetest

FR BS5852 0/1

EN1021 I&2



Faux
Black



Faux
Brown

Bouclé

composition

43% co, 28% pan, 14% pa, 12% vi, 3% pl

abrasion

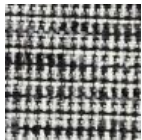
20.000> martindale

lightfastness 4

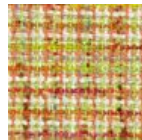
firetest

FR BS5852 0/1

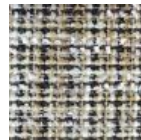
EN1021 I&2



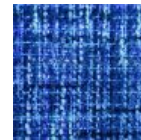
Bouclé
Black white



Bouclé
Rainbow



Bouclé
Brown



Bouclé
Blue

Twill

composition

72% wo, 8% pa, 20% pl

abrasion

75.000 martindale

lightfastness 5

firetest

FR BS5852 0/1

EN1021 I&2



Twill
Caviar



Twill
Graphite



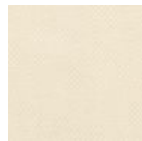
Twill
Grass



Twill
Light grey



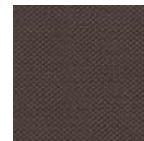
Twill
Linen



Twill
Natural



Twill
Passion



Twill
Walnut

Summit UNI

composition

22% wo, 2% pa, 14% pl, 62% pl filling

abrasion

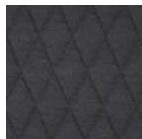
50.000 martindale

lightfastness 5

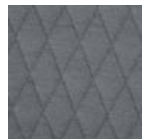
firetest

FR BS5852 0/1

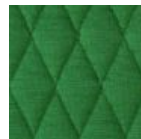
EN1021 I&2



Summit UNI
Caviar



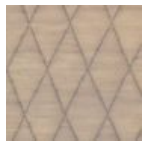
Summit UNI
Graphite



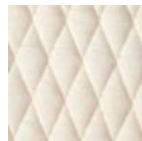
Summit UNI
Grass



Summit UNI
Grey



Summit UNI
Linen



Summit UNI
Natural



Summit UNI
Passion



Summit UNI
Walnut

Velour

composition

77% wo, 8% pa, 15% pl

abrasion

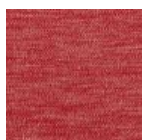
100.000 martindale

lightfastness 7

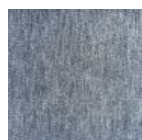
firetest

FR BS5852 0/1

EN1021 I&2



Velour
Coral



Velour
Stone



Velour
Moss

Arredo Leather

composition

100% semi aniline leather

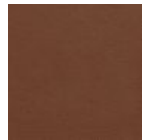
firetest

FR BS5852 0/1

EN1021 I&2



Arredo Leather
Black



Arredo Leather
Brown



Arredo Leather
White

Cervino Leather

composition

100% aniline leather

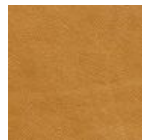
firetest

FR BS5852 0/1

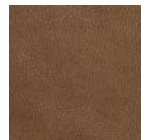
EN1021 I&2



Cervino Leather
Anthracite



Cervino Leather
Cognac



Cervino Leather
Mud



Cervino Leather
Pure



packaging

Bart Sofa, Daybed & Canape:

H 105 cm | 41.3"
W 250 cm | 98.4"
D 72 cm | 28.3"

Colli I

With packaging:
89 KG | 196 lb

Bart Sofa XL:

H 116 cm | 45.7"
W 306 cm | 120.5"
D 66 cm | 26.0"

Colli I

With packaging:
110 KG | 243 lb

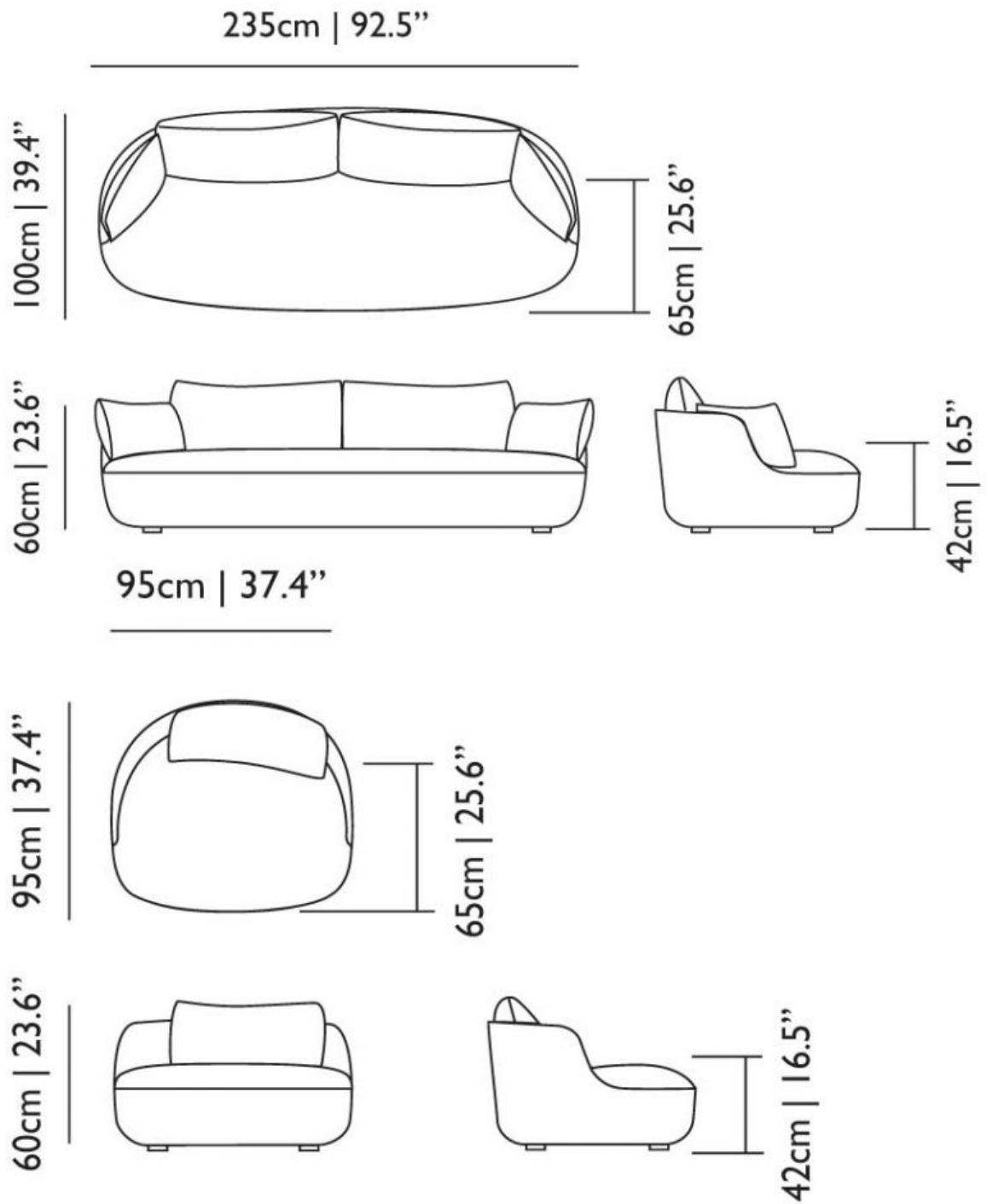
Bart Armchair, Bart Canape
Armchair:

H 102 cm | 40.2"
W 104 cm | 40.9"
D 63 cm | 24.8"

Colli I

KG | lb
With packaging:
39 KG | 86 lb

dimensions Bart Sofa & Bart Armchair



Dimensions Bart Daybed

