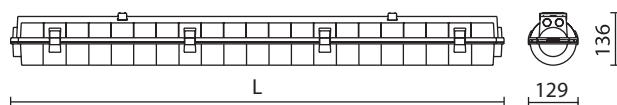
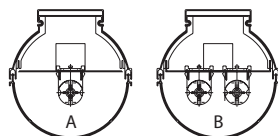


# COSMO \_1



|         |         |               |          |     |         |      |   |
|---------|---------|---------------|----------|-----|---------|------|---|
| 68400?0 | 8817000 | CO1 136 EVG   | 1xT8 36W | G13 | 230V AC | 2,00 | A |
| 68410?0 | 8818000 | CO1 236 EVG   | 2xT8 36W | G13 | 230V AC | 2,00 | B |
| 6841030 | 8818030 | CO1 236 EVG E | 2xT8 36W | G13 | 230V AC | 2,00 | B |
| 68420?0 | 8819000 | CO1 158 EVG   | 1xT8 58W | G13 | 230V AC | 2,30 | A |
| 68430?0 | 8820000 | CO1 258 EVG   | 2xT8 58W | G13 | 230V AC | 2,40 | B |
| 6843030 | 8820010 | CO1 258 EVG E | 2xT8 58W | G13 | 230V AC | 2,40 | B |

..... ? . 0 - BEZ ŚCIEMNIANIA / NO DIMMING • 5 - SWITCH DIM A • 6 - DALI • 8 - DSI • 9 - 1-10V  
 EVG - stateczniki elektroniczne / electronic ballast EVG E - 0 - 3 włączeń na dobę / 3 switching a day / cold start



|        | L<br>[mm] |
|--------|-----------|
| T8 36W | 1287      |
| T8 58W | 1587      |