

TACCIA LED

Mounting	Table/Floor
Lamps description	I REMOTE PHOSPHOR LED 2700K 930lm - CRI95 - 17,8W
Environment	Indoor
Finish	Anodized aluminum, Black
Technical description	Table/floor lamp providing indirect and reflected light. Metal reflector with gloss white finish inside and white powder-coated outside. Adjustable hand-blown clear glass diffuser. Matte black or anodized silver extruded aluminum body. Nickel-plated and zapon-varnished polished steel base.

ELECTRICAL

Emergency	Without
Voltage (V)	230

PHYSICAL



Supply	Power cord
Cord length(mm)	2380
Construction material	Aluminum, Glass
Weight (kg)	1.1



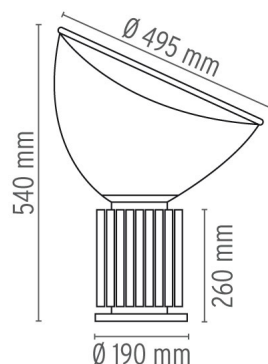
Taccia LED

designed by Achille & Pier Giacomo Castiglioni

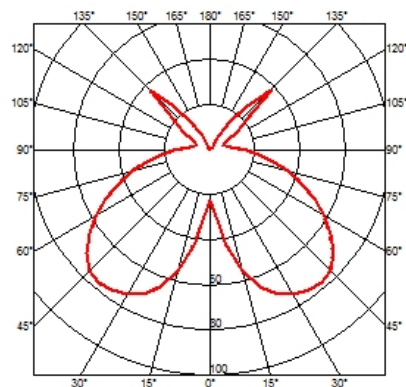
Table/floor lamp providing indirect and reflected light

	F6602004	Anodised aluminium
	F6602030	Black

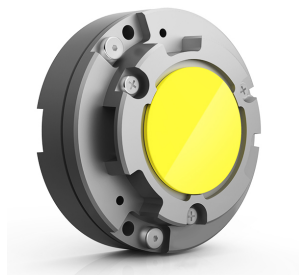
DIMENSIONS



CERTIFICATIONS



Taccia LED . Lamps



**I REMOTE PHOSPHOR
LED 2700K 930lm - CRI95 -
17,8W**

Lamp Watt:
17,8 W

Lamp category:
LED

Lamp type:
REMOTE PHOSPHOR LED



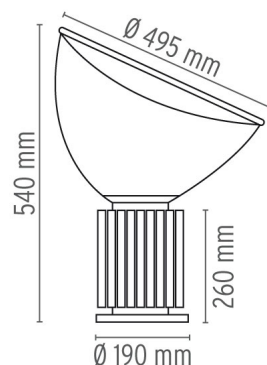
Taccia LED

designed by Achille & Pier Giacomo
Castiglioni

Table/floor lamp providing indirect
and reflected light

- F6602004 Anodised aluminium
- F6602030 Black

DIMENSIONS



CERTIFICATIONS

